

# REIMAGINANDO LA INTEGRACIÓN REGIONAL EN LA ERA DE LAS TECNOLOGÍAS DISRUPTIVAS

Instituto para la Integración de América Latina y el Caribe



INTAL **50** años

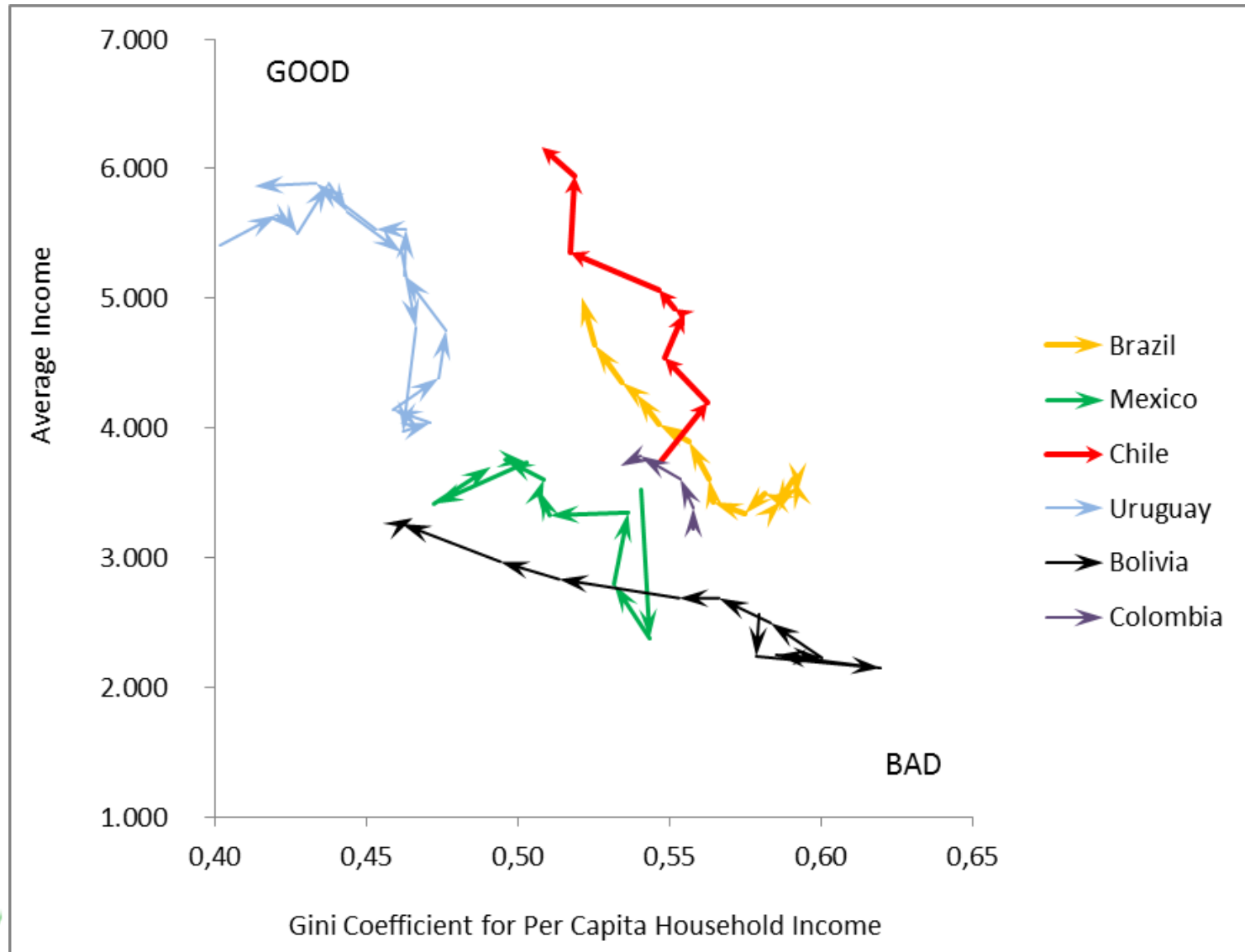
# The End of the Good Times

But they were really good

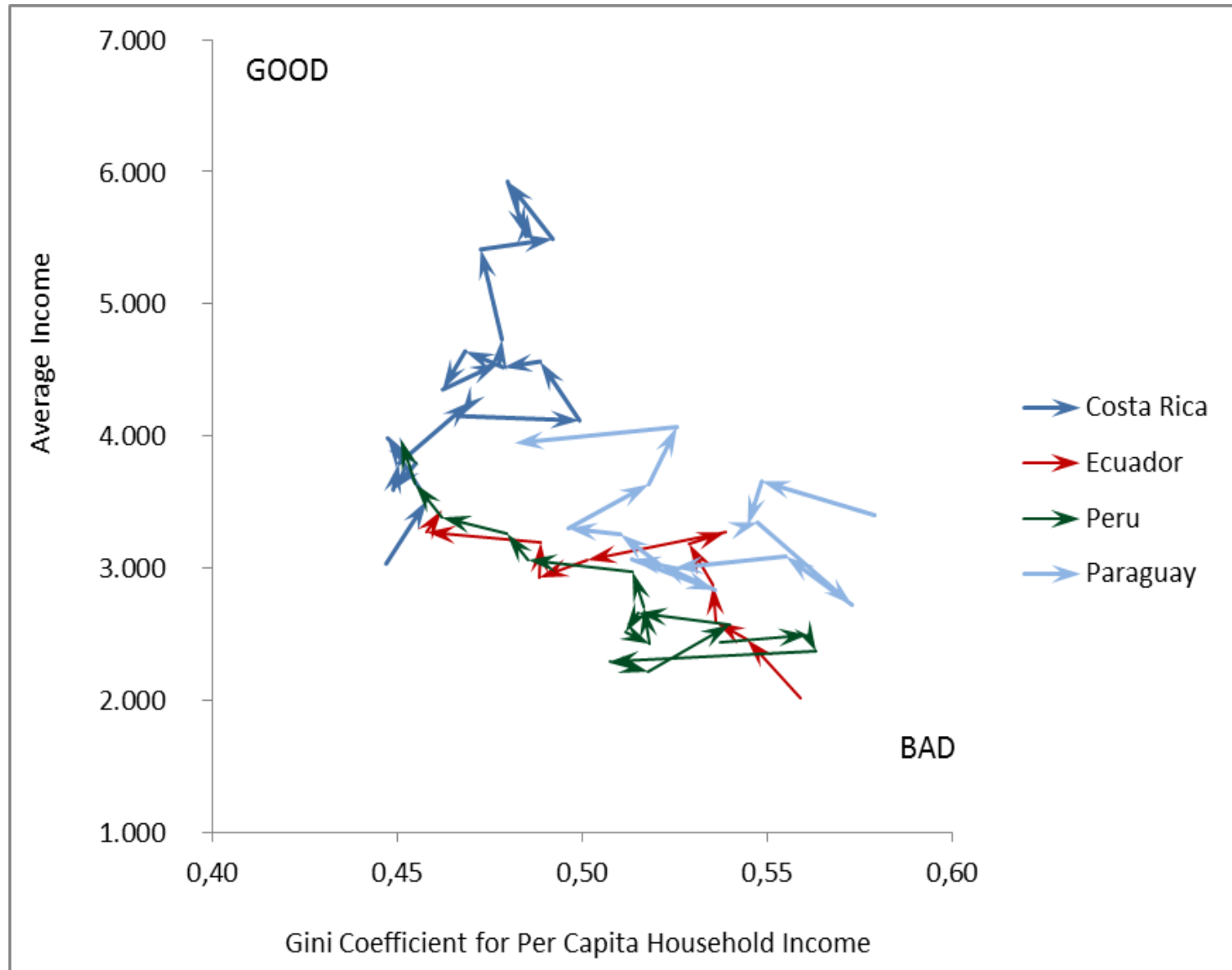
# Latin America

Welfare and Employment

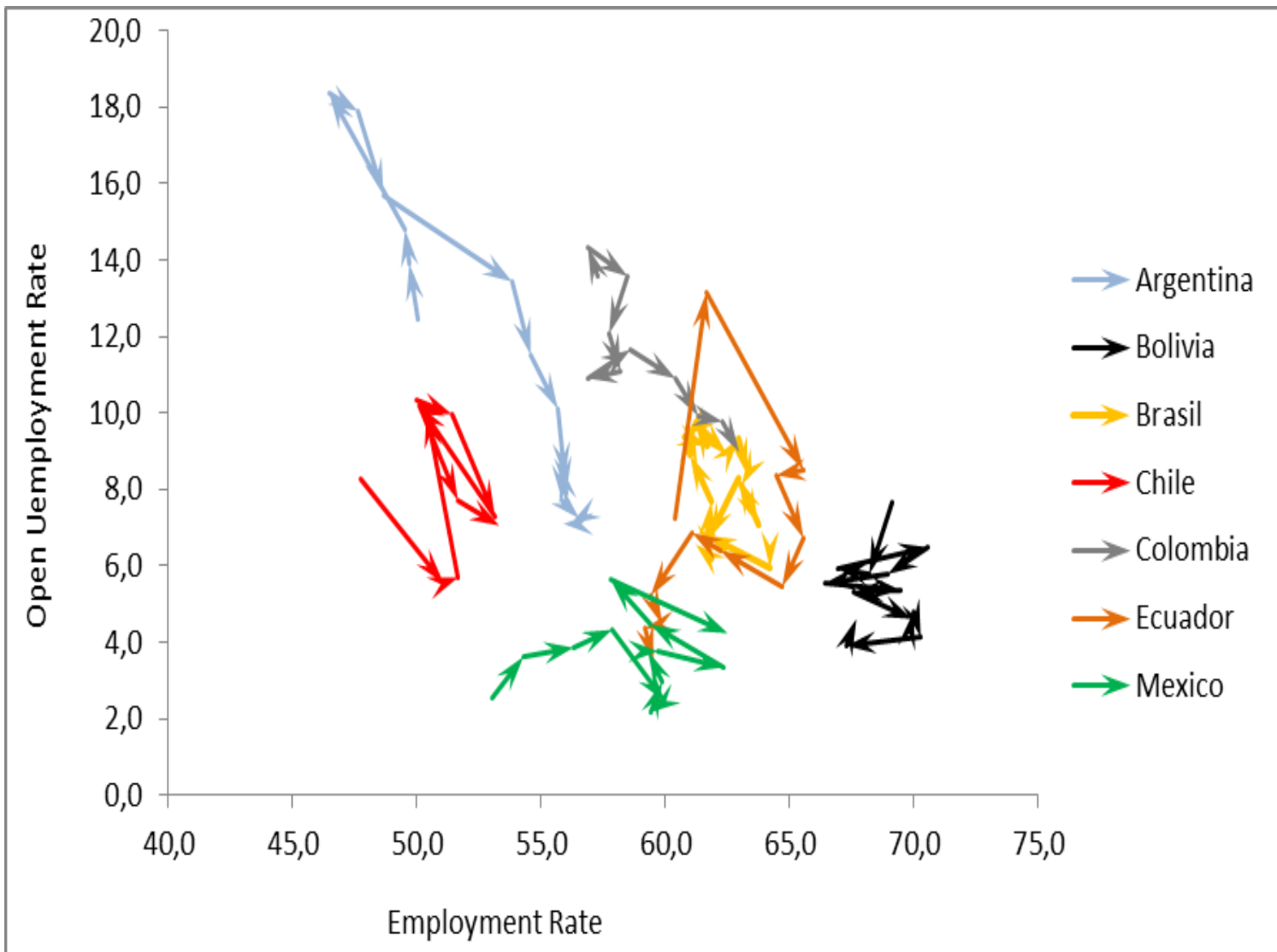
# Welfare has Seen Large Improvements in Latin America



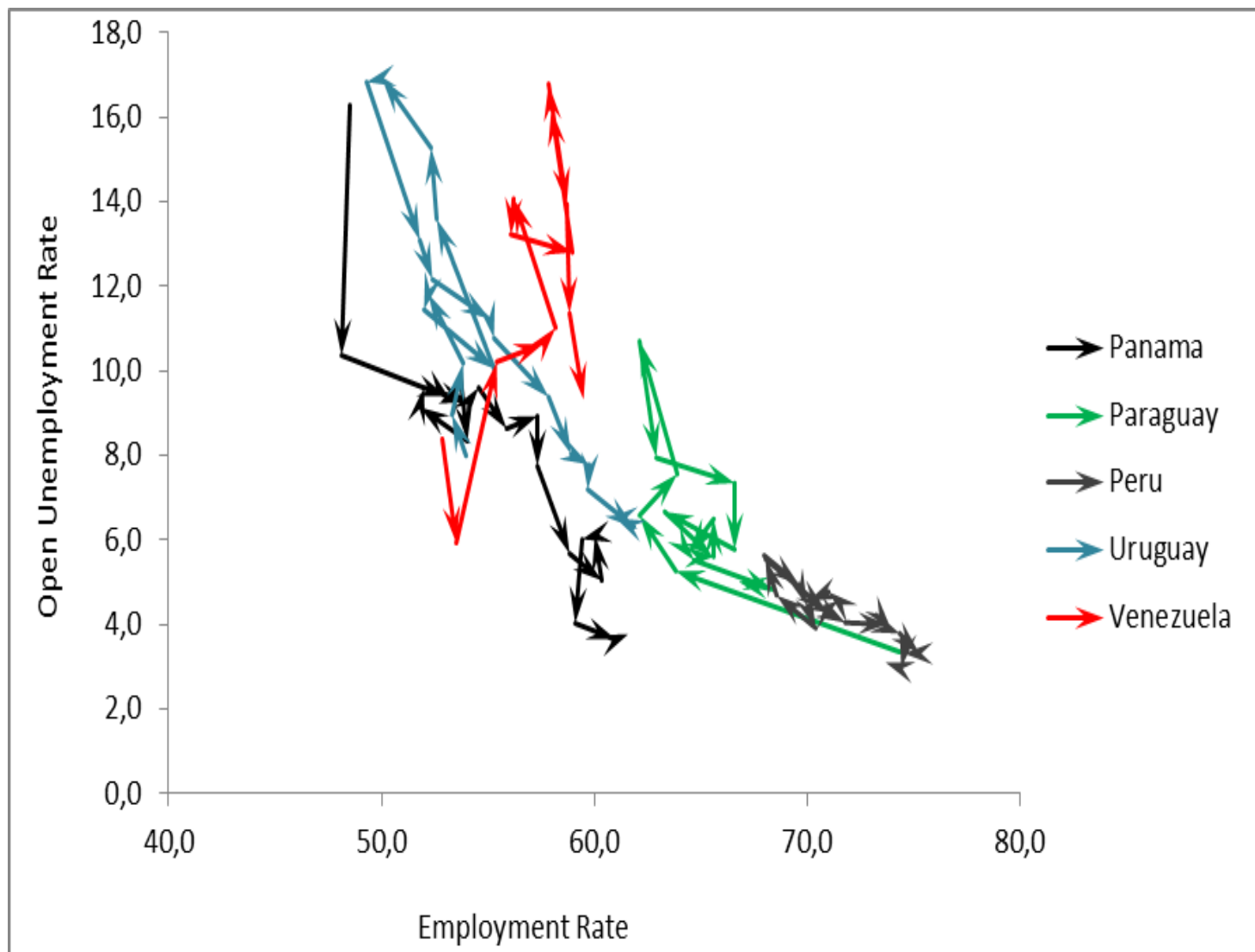
# Welfare has Seen Large Improvements in Latin America



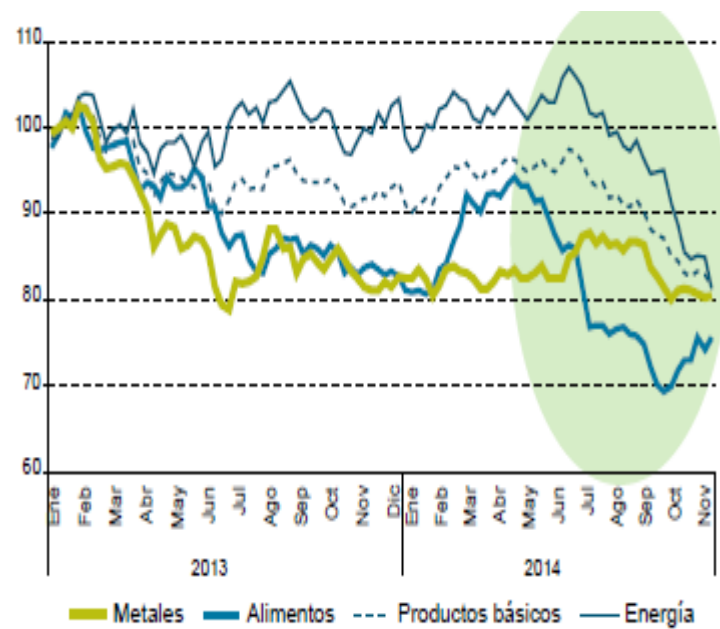
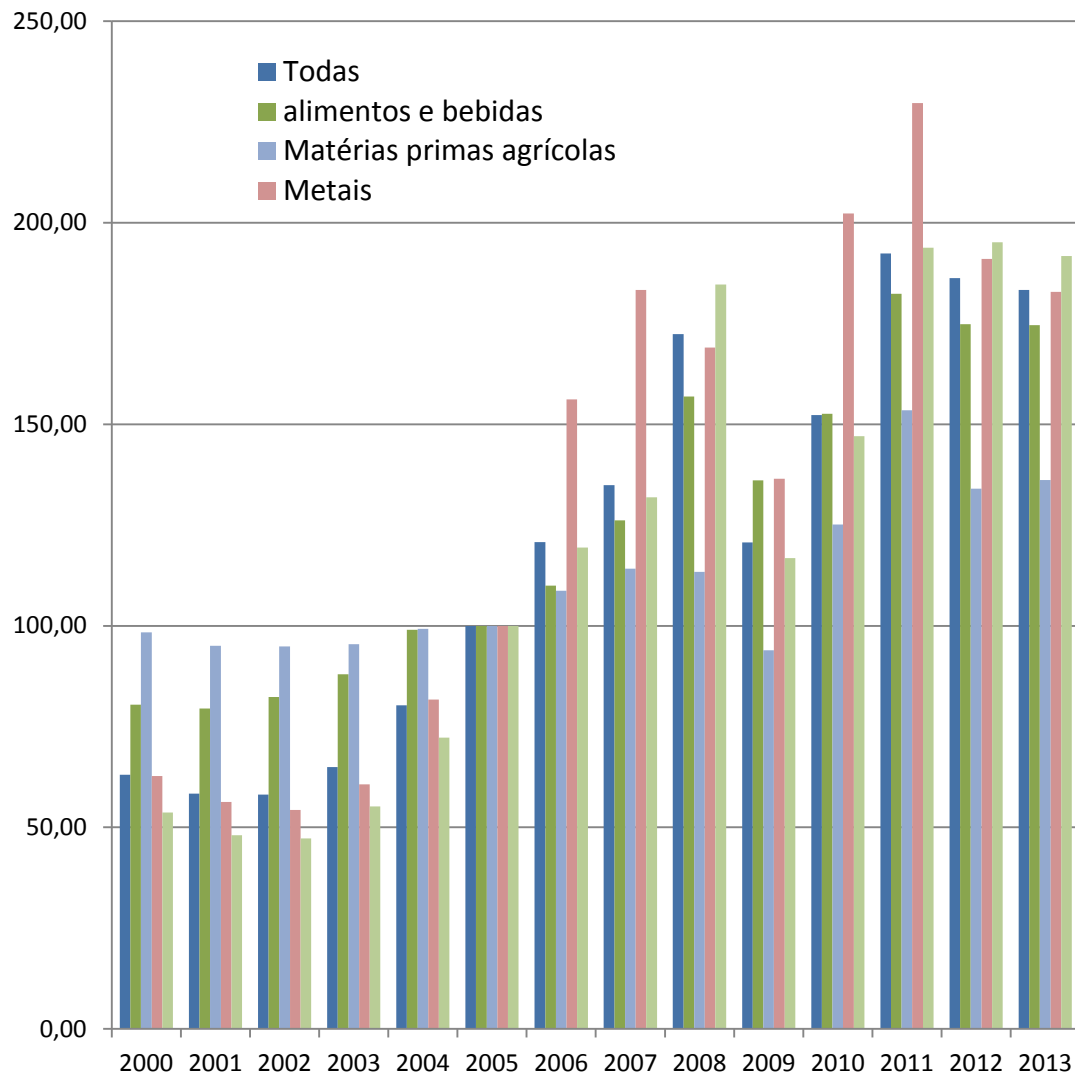
# The Labor Market has been Crucial



# The Labor Market has been Crucial

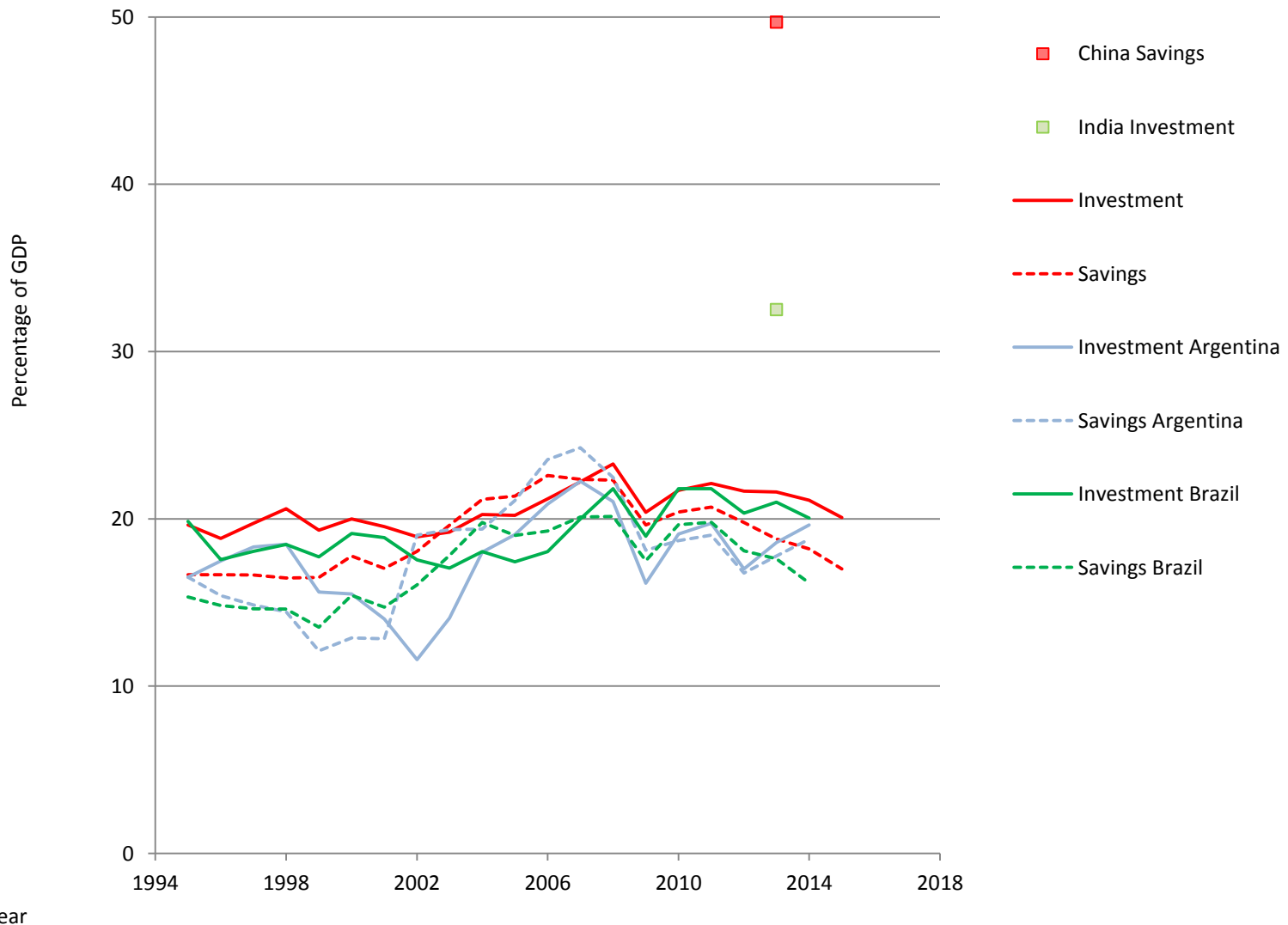


# Commodity Prices



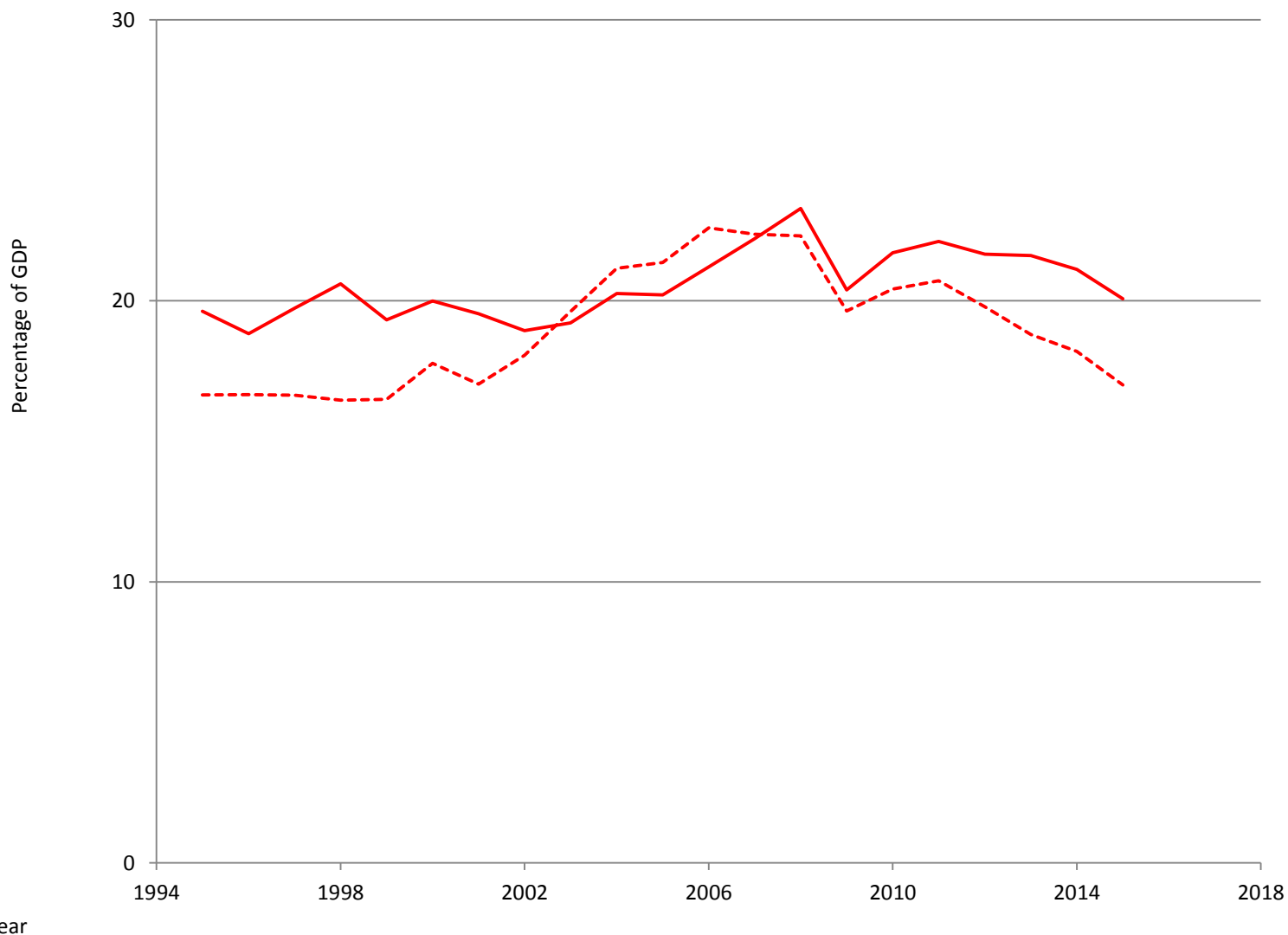


# Savings and Investment are Low (even for high commodity price years)



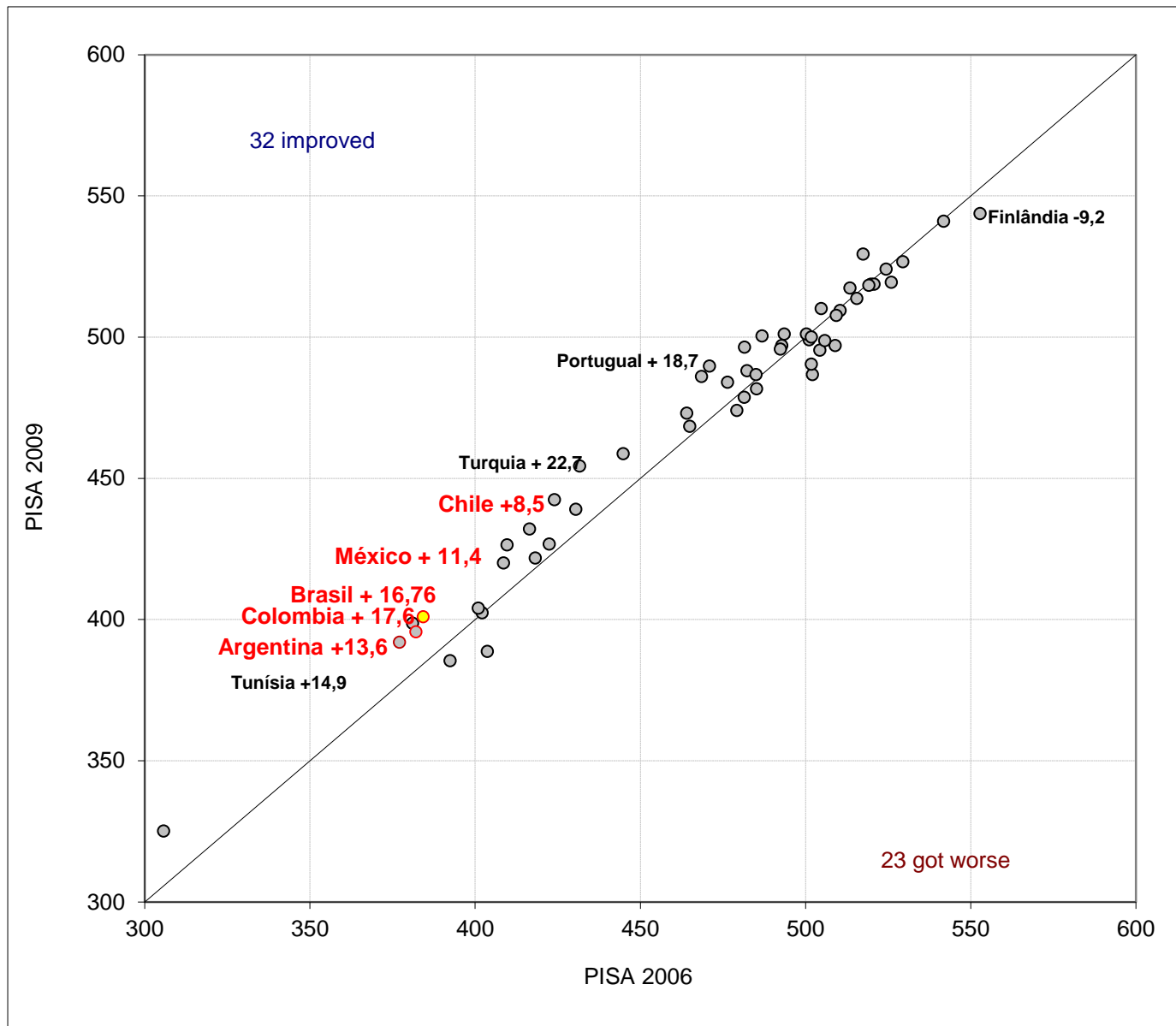
Year

# Savings and Investment are Low (even for high commodity price years)



Year

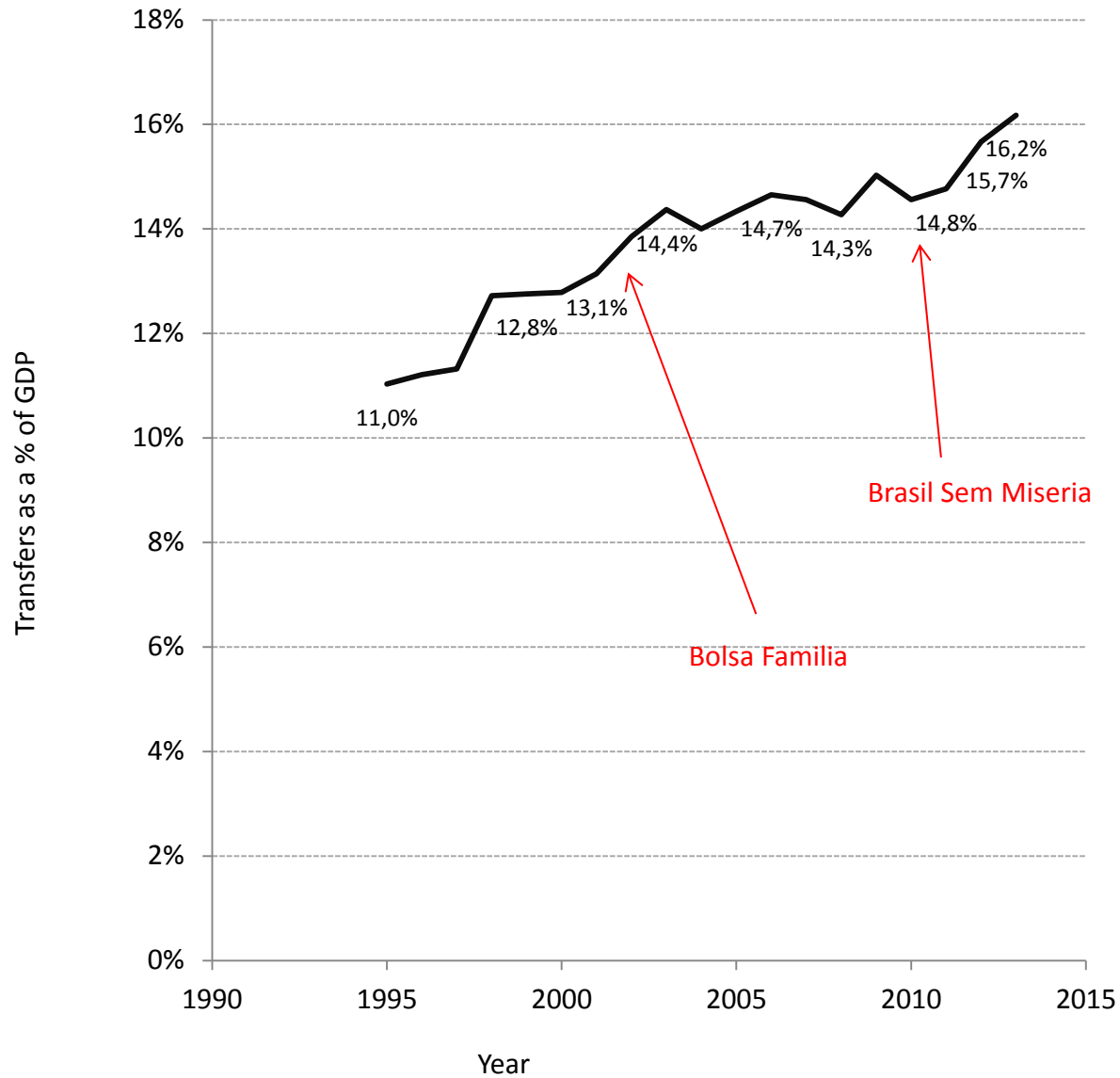
# The Educational Film Looks Good but the Picture is Bad



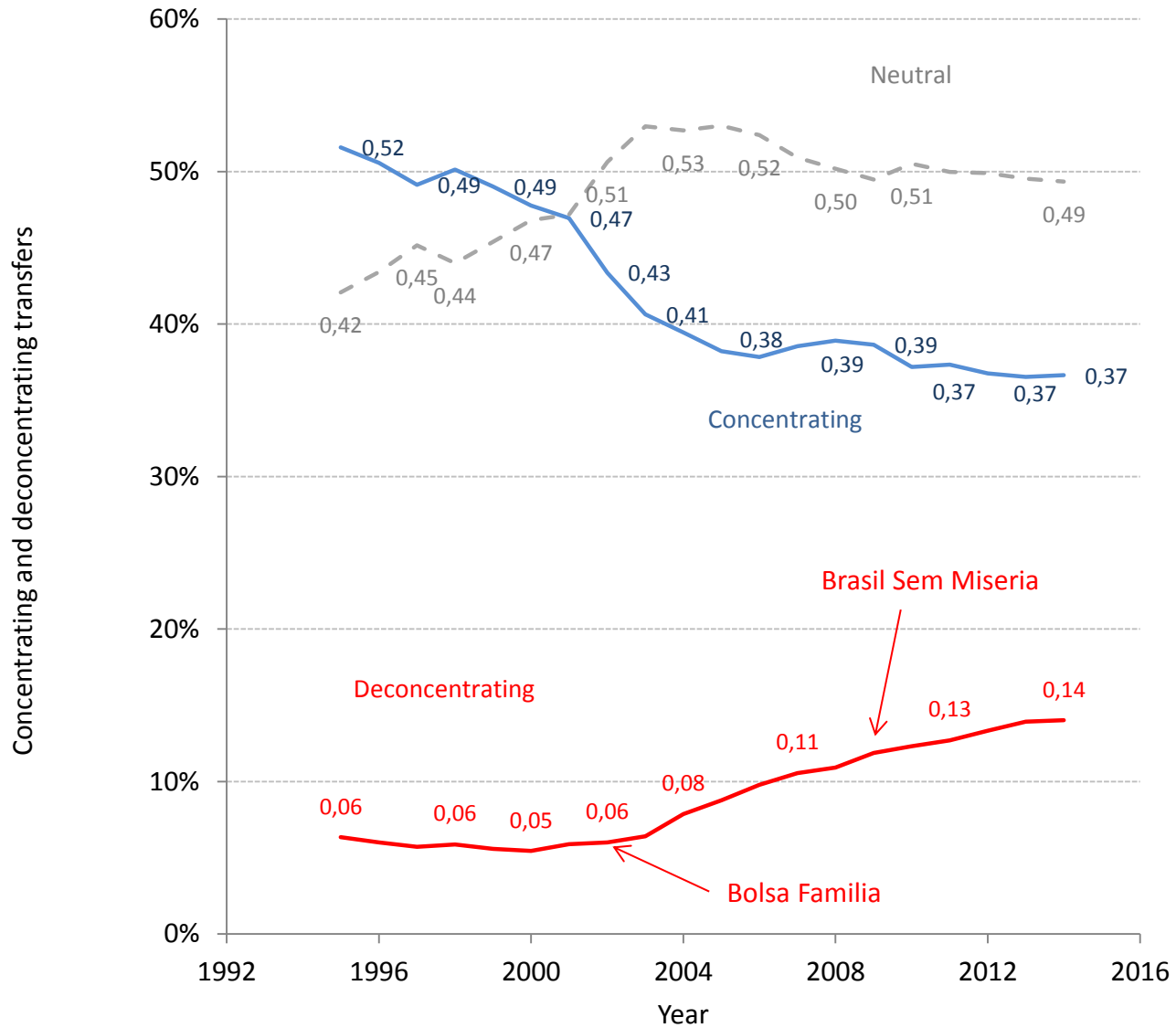
# Brazil

## The State

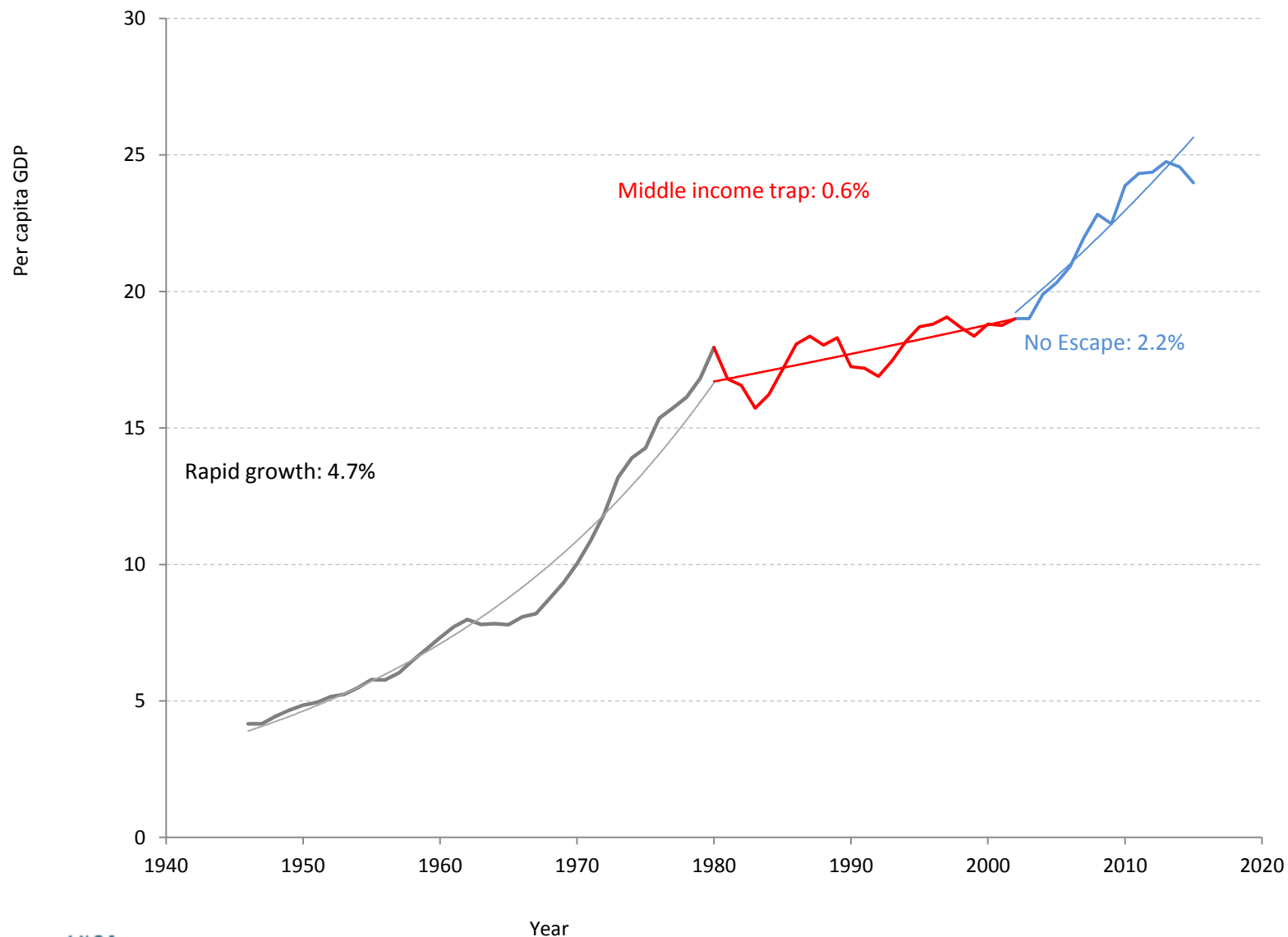
# Transfers as a percentage of GDP



## Concentrating and deconcentrating transfers



# Brazil: Rapid growth, the middle income trap and no new trajectory



# Recent Labor Market Performance in Brazil

